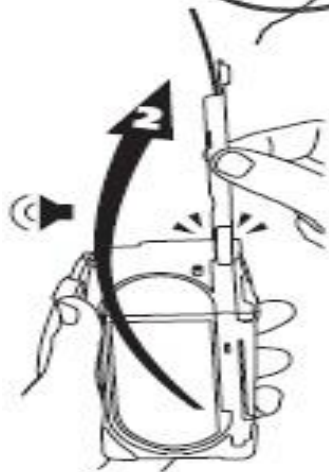
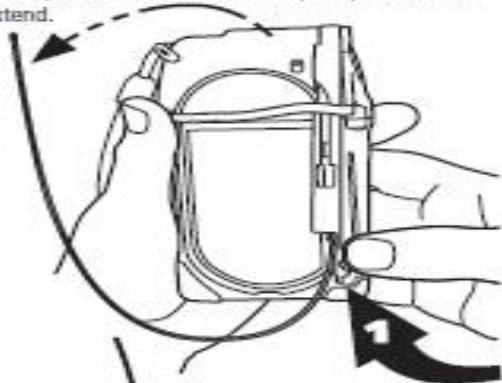


GME MT410G Accusat GPS 406 MHz PLB

Extract from user manuals

ACTIVATING THE MT410/410G

1. Hold firmly and release the antenna by pushing the black arm (where marked by a yellow triangle) inwards then upwards. The antenna will quickly uncoil and extend.

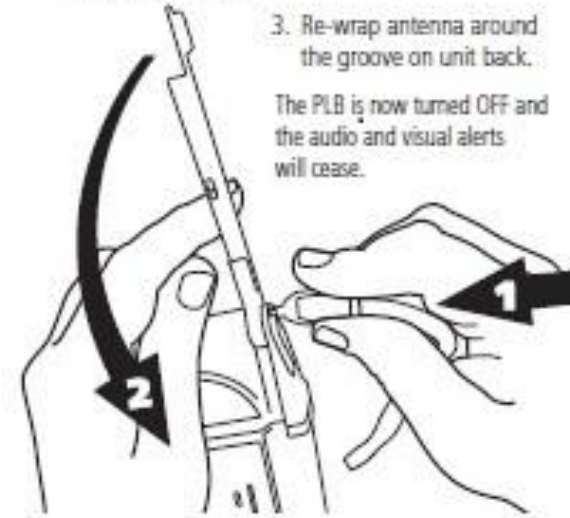


2. Swing the antenna fully upwards 180 degrees clockwise, breaking the safety seal. The antenna arm will click into place.

The PLB is now ACTIVE.

DEACTIVATING THE MT410/410G

1. Using the key (attached to the lanyard) depress the antenna latch.
2. Swing the antenna fully down 180 degrees anti-clockwise and latch.



3. Re-wrap antenna around the groove on unit back.

The PLB is now turned OFF and the audio and visual alerts will cease.